



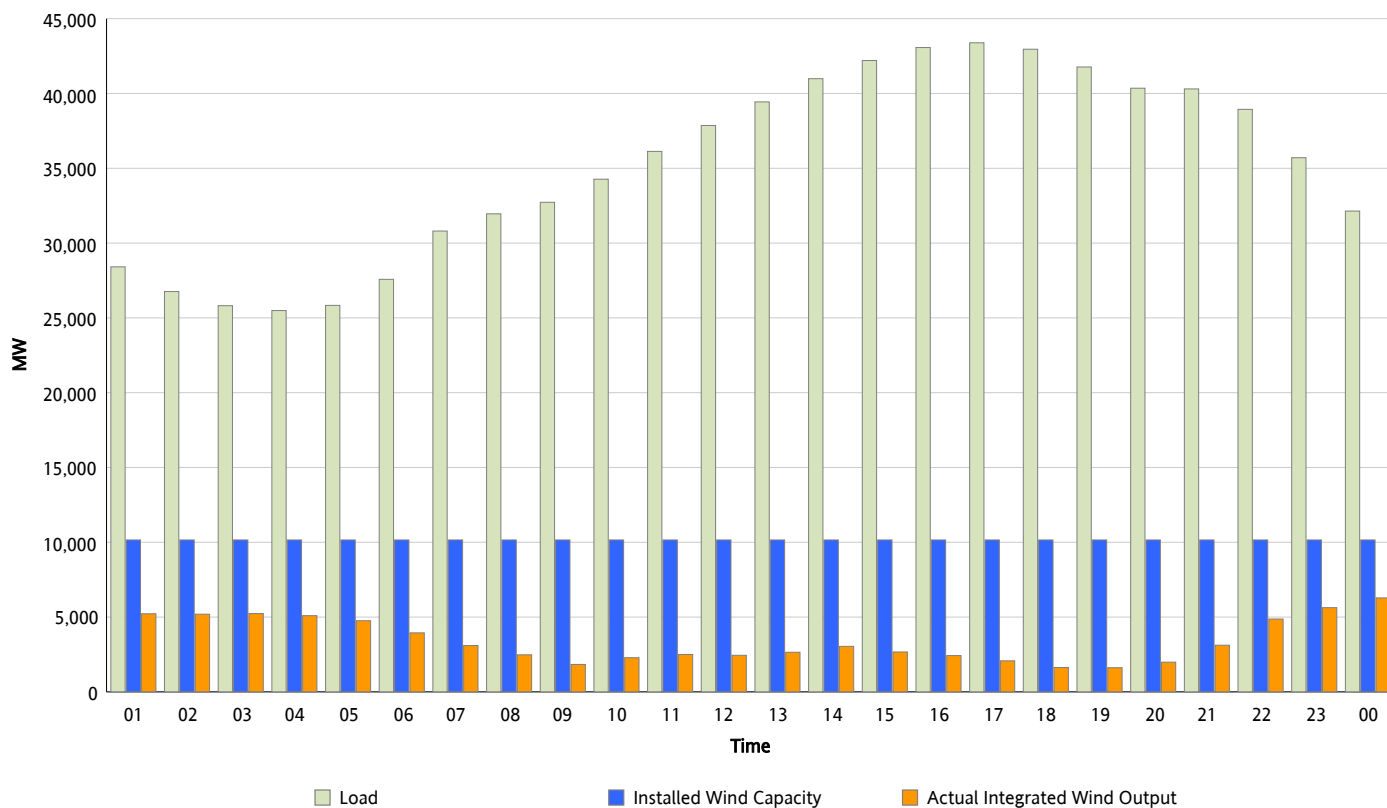
## ERCOT Grid Operations

### Wind Integration Report : 04/29/2013

Peak Load	43,388 MW
Load Peak Hour (HE)	17
Wind Over Peak	2,074 MW
Wind Record 02/09/13	9,481 MW
Max Wind Value*	6,519 MW
Wind Peak Time	23:19
Wind Integration %	19.99 %

#### Hourly Average Actual Load vs. Actual Wind Output

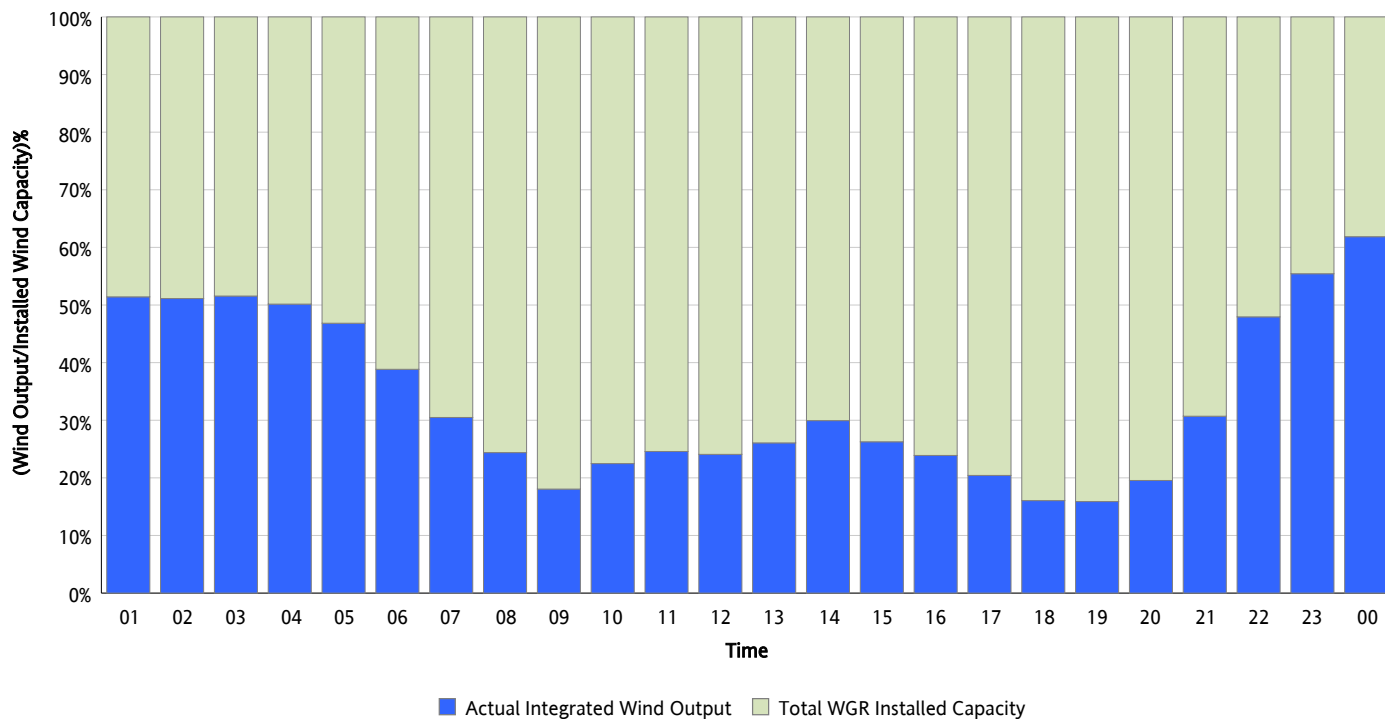
04/29/2013



\* Wind Record and Wind Max represent instantaneous values and the rest of the values are integrated over the hour

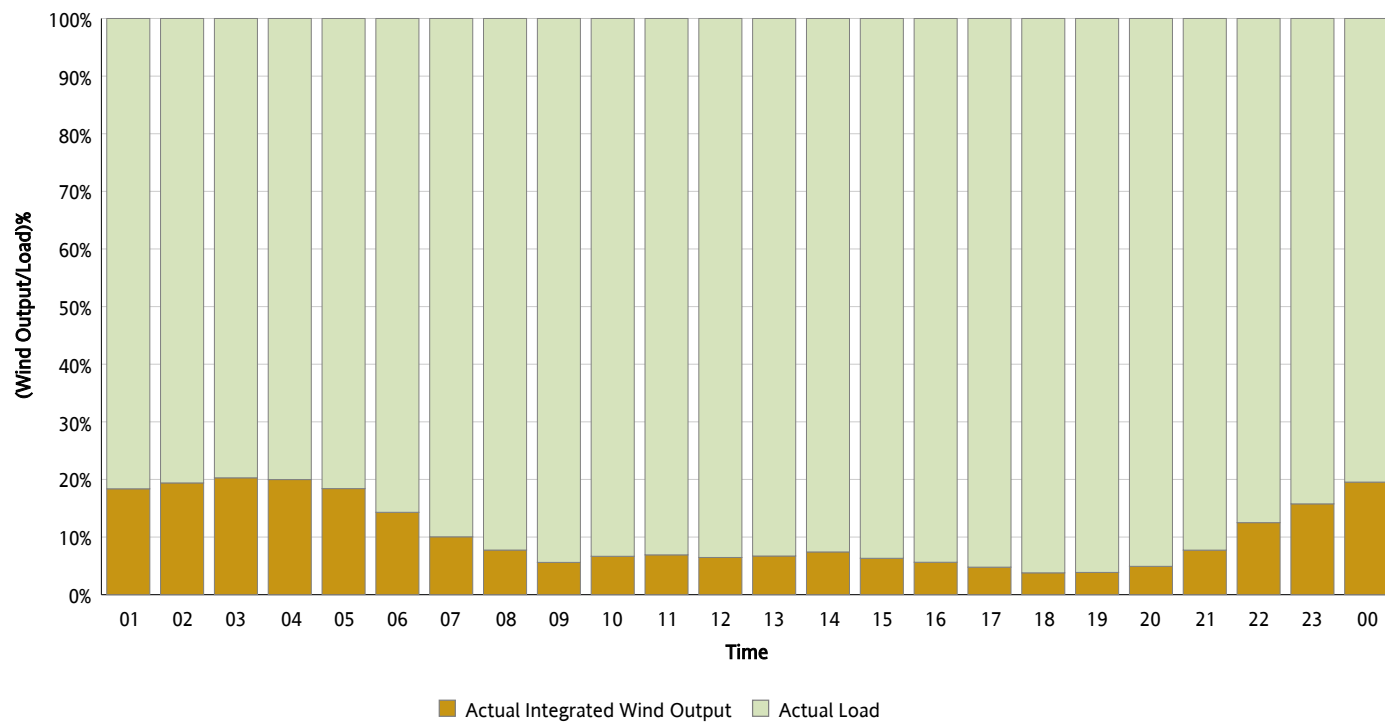
## Actual Wind Output as a Percentage of the Total Installed Wind Capacity

04/29/2013



## Actual Wind Output as a Percentage of the ERCOT Load

04/29/2013



## ERCOT Load vs. Actual Wind Output

04/22/2013 - 04/29/2013

